

1. System Requirement

Hardware Environment

CPU: based on X86 processor, Pentium 166 or better
Memory: 64 MB RAM(128 MB RAM is recommended)
Hard Disk: 30 MB spaces left

Software Environment

Windows 98/2000/XP/2003 Operating System

Natural Environment

When using the system, you must avoid letting sunlight or other glare in the room, and especially the projected screen must be screened from the direct light. Please pay attention to that never obstruct the light path between the nib optical line and signal receiving box, while doing any light pen operations.

2. Product Components List

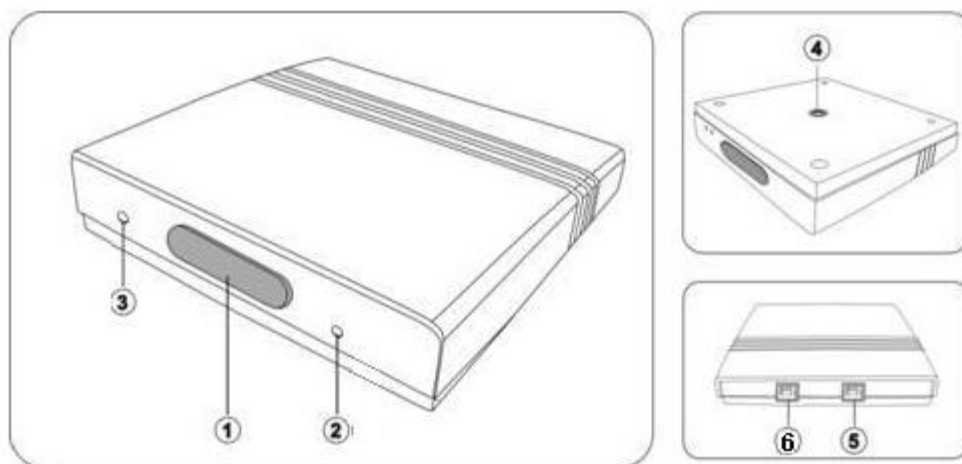
Please check whether your package contains the same components as ones in the attached list. If some components are found lack or damaged, please contact with the local dealer or our company promptly.

1. Light pen body
2. Extension Pointer
3. Signal Receiving Box
4. Compact Disc
5. Tripod
6. A 2-meter USB Line
7. Instruction Book
8. Quality-guaranteed Card
9. Quick Guide

✧ A 10-meter USB Line(Optional)

Signal Receiving Box

Signal Receiving Box can receive the signal sent by the indicating device (special pen head for writing, extension pointer), identify the indicating device positions, and transmit the position and operation information to computers via computer's USB port.



- ① Signal Receiving Area: signal receiving box's front-end receiving area. Through this area, the box receives signal from the light pen.
- ② Signal Pilot Lamp: displays as green when the box is working.
- ③ Power Pilot Lamp: displays as red when the box is working.

- ④ screw-type: used to connect with tripod or lifting bracket.
- ⑤ USB Port: its shape is square.

Pointer

Pointer body

It is used to connect the telescopic pointer, most of the operation achieves by the press button on the body of the pointer .



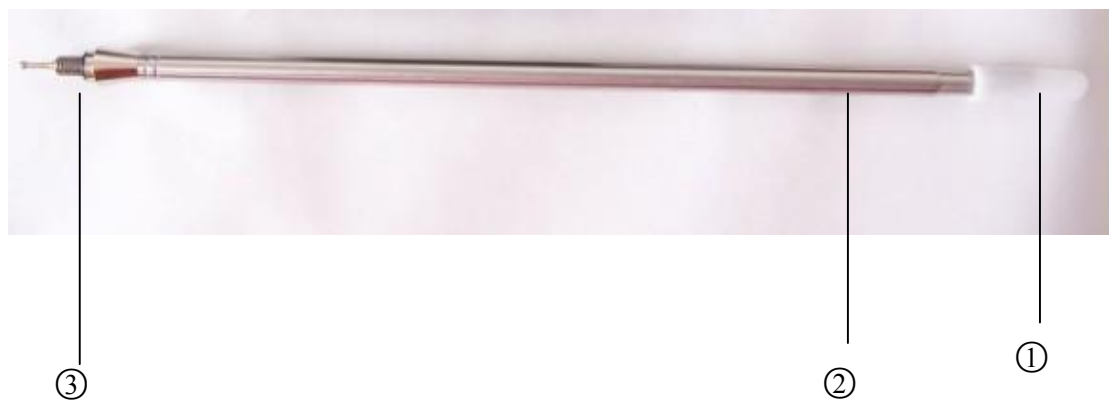
- ① “L” key: Press and release the “L” key once equals click the left key of the mouse in the pen tip, long press the “L”key equals click the right key of the mouse in the pen tip.
- ② Back cover of the pen body: unscrew the back cover, put the batteries and then it can be used.
- ③ Interface: It’s threaded interface used to connect the telescopic pointer

How to use the pointer:

Interactive writing pen operation	Operating methods	Mouse function
once “L”key click	Press and release “L”key once	Click the left key of the mouse
twice “L”key click	Continuous press and release the “L”key twice (interval not too long)	Click the left key of the mouse twice
long press “L”key	Press the “L”key for at least 2 seconds	Click the right key of the mouse once
drag	Press “L”key, move the interactive writing pen which can achieve dragging	The operation of the drag of the left and right key of the mouse

Telescopic rod

The connecting use of the Telescopic rod and pointer body is good for operating on the screen.

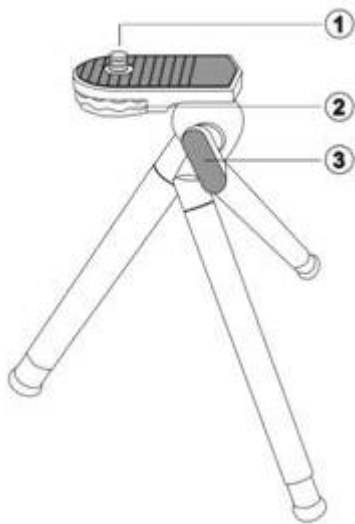


①Signal indicator light

②Rod body: retractable;

③Rod knob: correctly insert the rod into the body of the pointer, rotate it to fix the teaching rod

Tripod



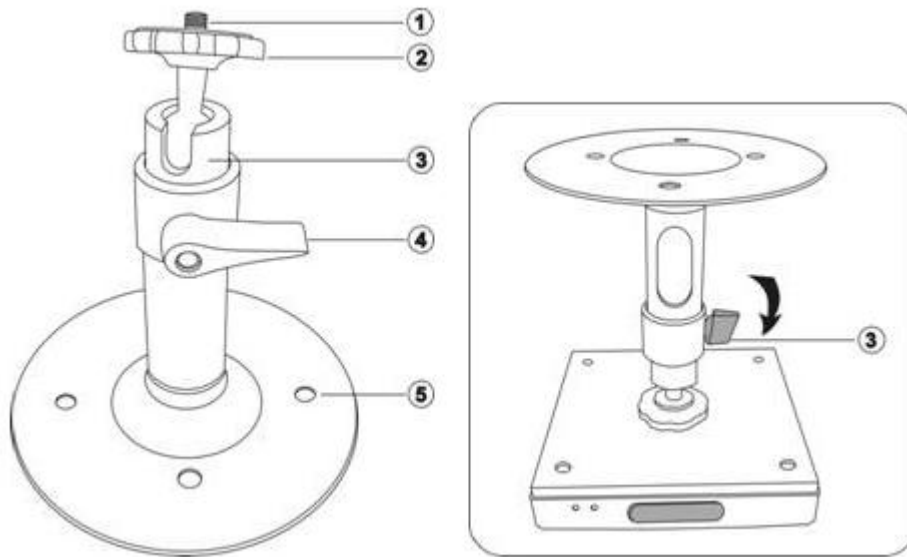
It is used adjust and fix the position of the signal receiving box when desktop installing of Projection Genius.

It is very convenient to use tripod to fix the signal receiving box when using Porjection Genius.

- ① Retaining screw: used to connect with the signal receiving box when desktop installing.
- ② Retaining Knob: tighten it to fix the signal receiving box, when connecting with the box.
- ③ Knob: used to adjust the box' s direction when connecting with the box.

Lifting Bracket

It is used adjust and fix the position of the signal receiving box when lifting installation of Projection Genius. When the projector and Projection Genius don't need to change positions for times, the lifting bracket is suitable for fixing the position of the box.

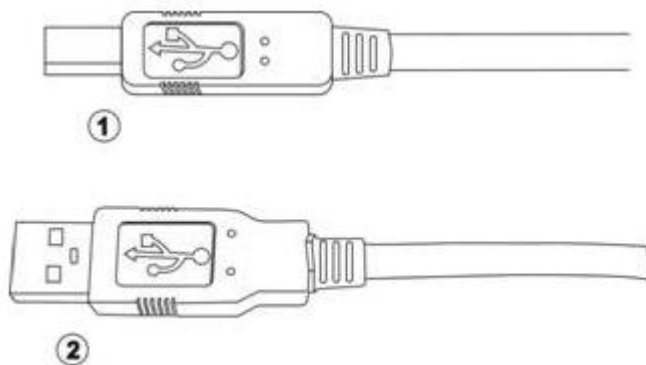


- ① screw: used to connect with the signal receiving box.
- ② Retaining swivel bolt: used to retain the connection with the box.
- ③ Pivot: used to adjust the angel of the box..
- ④ Spanner: after determining the box angel, push down the spanner to fix the angel.
- ⑤ Retaining sheel: fix the lifting bracket on the ceiling with screw.

* Lifting bracket is the optional component. Please purchase it by yourself.

USB Line

It is used to connect computer with the signal receiving box.



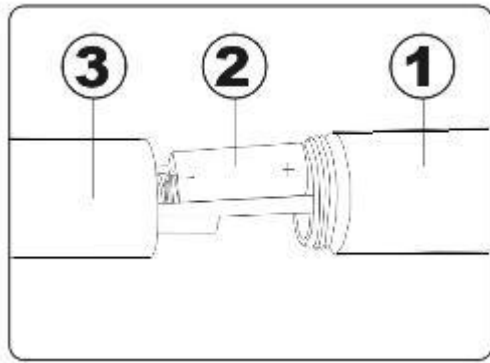
- ① USB PORT: this is a square USB port, used to connect signal receiving box.
- ② USB PORT: this is a flat USB port, used to connect any USB port on the computer.

Warning:

*USB port has its direction. If the prot is plugged by mistake, the device might be damaged and not used.
Don't let the receiving box's frontage face to any one before selecting desktop installation, to prevent the optical maser directly shooting eyes.*

Battery

Porjection Genius uses the common button battery which outside diameter is 11.5mm.



Install: Open the back lid of the light pen, put three button batteries into the pen , and then tighten the cover.

- ① light pen body' s back lid
- ② button battery
- ③ pen body

Note:

Please pay attention to the battery's straight and subtractive polarity. Generally speaking, the bigger ouside part of the battery is the straight polarity. Projection Genius uses the common button battery which outside diameter is 11.5mm.

Please make sure that insulating plastics part of the back lid is in good condition.

Software Installation

1. Double-click the installing program. The following dialog box appears:



2. Click "Next", the following dialog box appears:



3. Click "Yes".



4. Select the installing path, then click “Next”.



5. Click “Next” button, and the following dialog box displays:



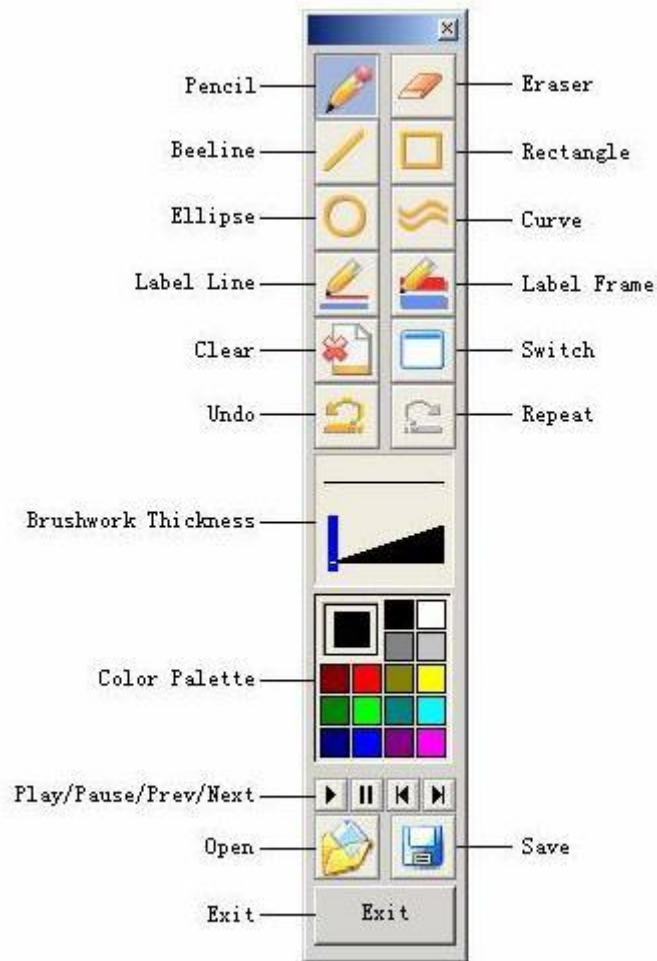
6. Click “Install” to start installing. The following dialog box appears when installation finished.



7. Click "Finish" to exit the installing wizard. The installation finished.

Projection Genius systemDesktop Drawing toolbar and Control Panel toolbar

Projection Genius systemDesktop Drawing toolbar includes the following tools: pencil, Eraser, Beeline, Rectangle, Ellipse, Curve, Label Line, Label Frame, Clear, Switch, Undo, Repeat, Brushwork Thickness, Color Palette, Play/Pause/Prev/Next, Open, Save and Exit.

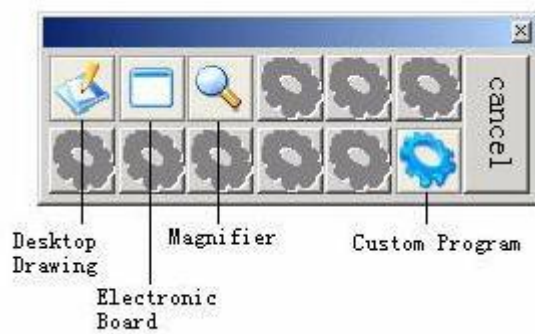


Projection Ge

nus systemControl

Panel toolbar includes the following tools:

Desktop Drawing、Electronic Board、Magnifier、Custom Program.



Q1: After installing devices, there is still a “!” mark appearing in the Device Manager?

A1: To solve it, remove all the drivers in the Universal Serial Bus controllers of the Device Manager.

Q2: Why cannot install the software?

A2: This is caused by the protected system registry, but does nothing with the installing program. The solution is to cancel protecting the registry.

Some viruses may cause the problem, so the system needs to delete viruses.

Q3: Why isn't the position of the mouse pointer matched?

A3: When you find the position of the mouse pointer is not matched, you need to re-adjust the signal receiving box's position and angle,, or do coordinate sampling again.

Q4: Why does the cursor jump greatly?

A4: Please check whether the sunlight or other strong light shoot on the projected screen.

Q5: Why are there disturbs when people walk on the platform?

A5: This may occur when the projector is placed on the desk. Because the projector is too close to the presenter, and the reflex intension of human body becomes so big, which disturbs the signal receiving box. When the same light energy spreads around on the screen, the intension falls, so the dispersion on the screen doesn't cause disturbs. The solution is: Don't get too close to the projector, or put the projector in a further place.

Q6: How to solve the problem that the action of the light pen delays about 5 seconds?

A6: Find the used port from Device Manager in Control Panel, and set Receive Buffer to the lowest value in the Advanced Settings. Then restart the software.

Q7: How to verify whether there is light disturbing?

A7: The problem, that sampling cannot be done, cursor jumps or the random light appears, may be caused by the strong light's disturb, or the error device.

A simple verifying method is: block the front part of the receiving head with hands. At this time, if the pilot lamp stops twinkling(bright or dark), the device works normally, so the reason causing the problem is that the brightness of the environment is too high.

Q8: Why does the signal receiving box break off the program communication?

A8: First, check whether the connecting line of the box is in good condition. If the line is normal, please check whether the system waiting time of the Power Management to Never status. (Please select Never.)